

Boardwalk

Royate Hill

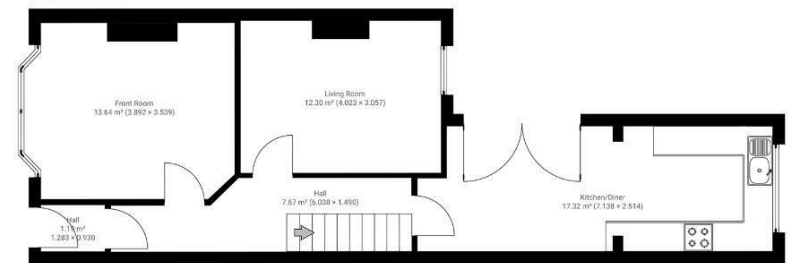
EASTVILLE, BRISTOL

Royate Hill EASTVILLE

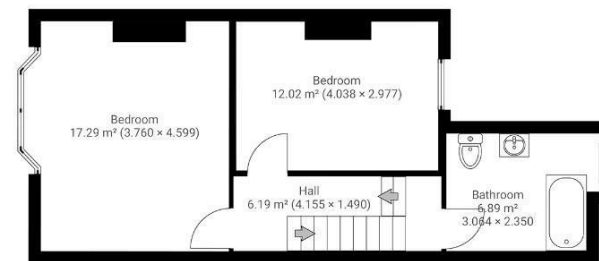
APPROXIMATE FLOOR AREA
94.5 SQM / 1017 SQFT



GROUND FLOOR



FIRST FLOOR



Boardwalk

Royate Hill

EASTVILLE, BRISTOL

£

£360,000



BS5 6LP

zzz

2 Bedrooms



1 Bathrooms

"With two spare rooms to let, I've always lived with lodgers. A rental income of over £600 per room has made mortgage payments more manageable. The open-plan kitchen/diner, with bi-fold doors and a decked garden, has been the heart of many gatherings – whether indoors, around the table, or outside by the fire. Then the separate living room snug offers a retreat for quiet time. The location is very convenient – just minutes from the M32. For a walk or run, Eastville Park is on the doorstep."

